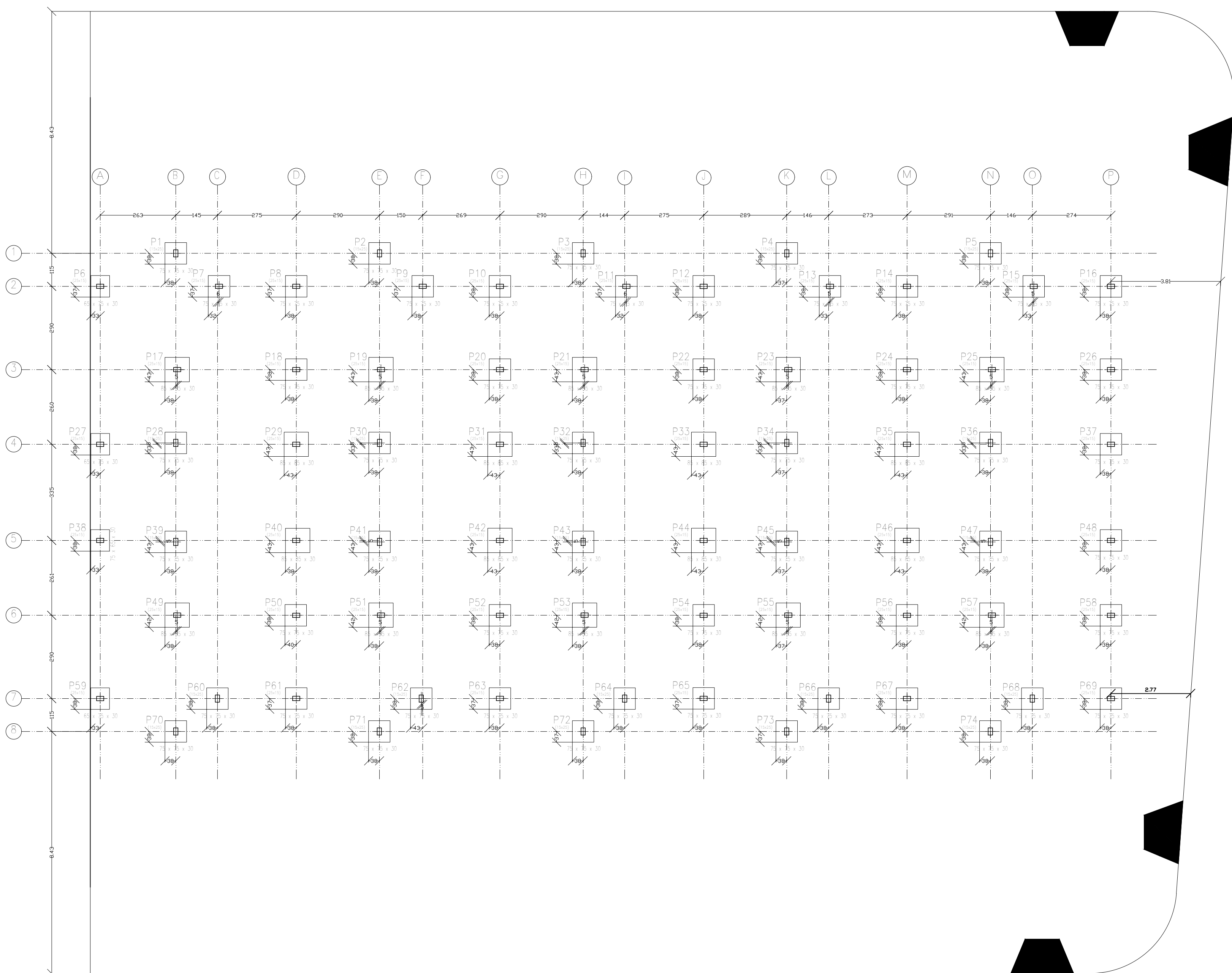
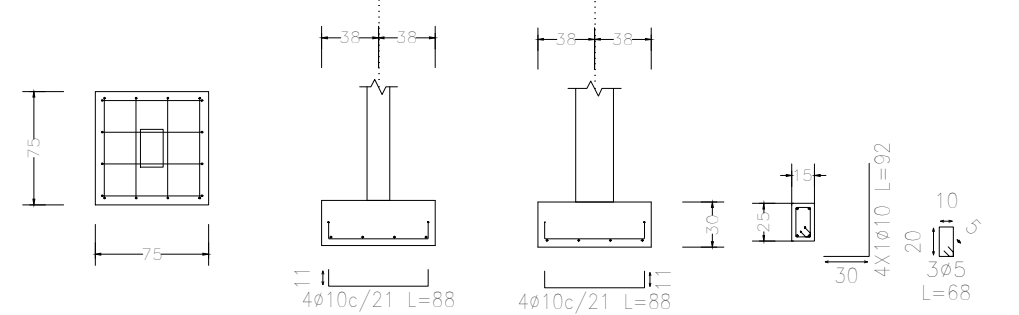


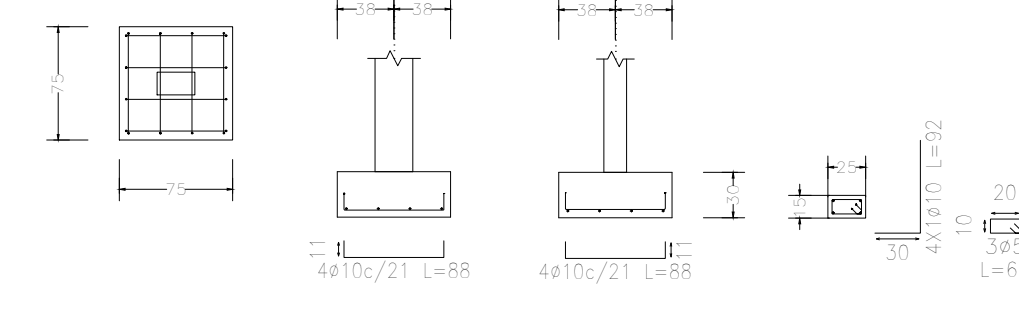
FUNDAÇÕES



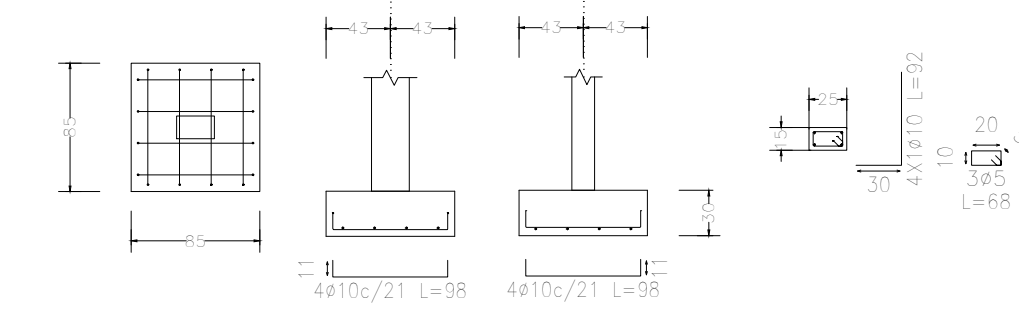
P1, P2, P3, P4, P5, P28, P30, P32, P34, P36, P39, P41, P43, P45, P47, P60, P62, P64, P66, P68, P70, P71, P72, P73 e P74



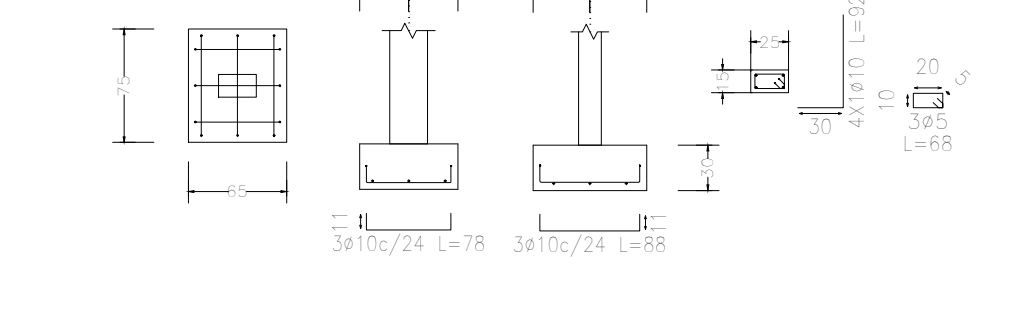
P7, P8, P9, P10, P11, P12, P13, P14, P15, P16, P18, P20, P22, P24, P26, P37, P48, P52, P54, P56, P58, P61, P63, P65, P67 e P69



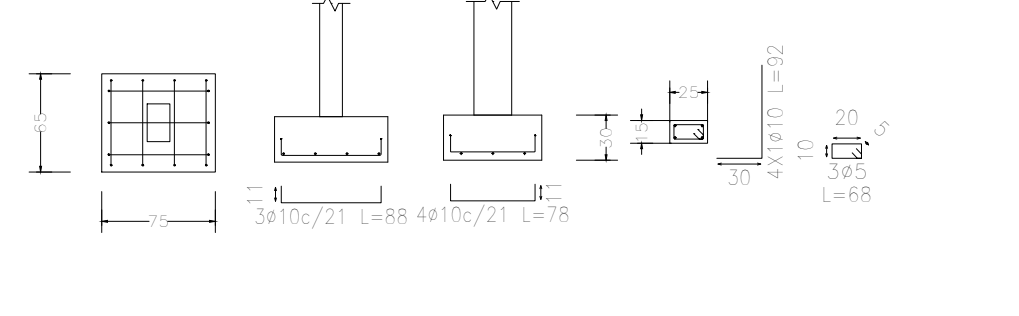
P17, P19, P21, P23, P25, P29, P31, P33, P35, P42, P44, P46, P49, P51, P53, P55 e P57



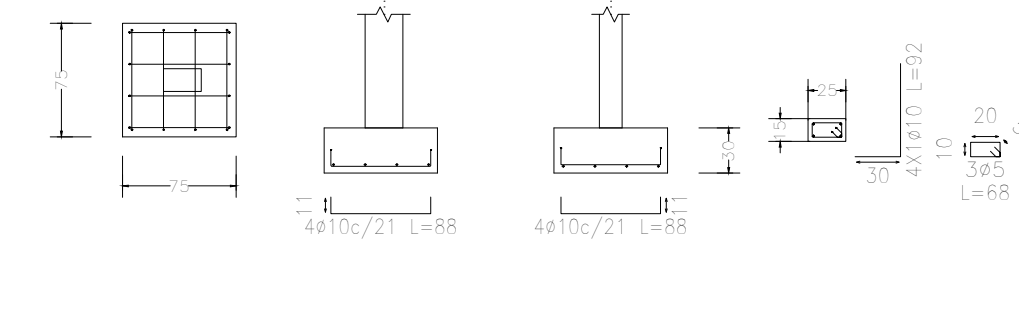
P6, P27 e P59



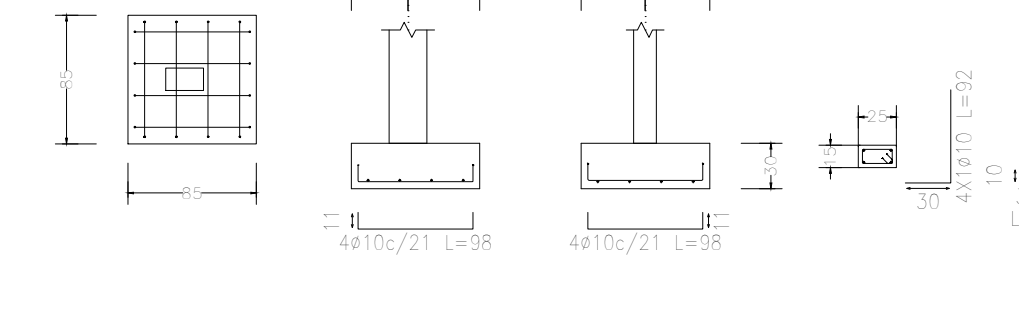
P38



P50



P40



Subsolo:
Fôrmas:
Concreto: C25, em geral
Aços em fundações: CA-50 e CA-60
Escala: 1:100

QUADRO DE ELEMENTOS DE FUNDAÇÃO				
Referência	Dimensões (cm)	Área (cm²)	Armadura (cm²)	Armadura (cm²)
P1, P2, P3, P4, P5, P6, P7, P8, P9, P10, P11, P12, P13, P14, P15, P16, P17, P18, P19, P20, P21, P22, P23, P24, P25, P26, P27, P28, P29, P30, P31, P32, P33, P34, P35, P36, P37, P38, P39, P40, P41, P42, P43, P44, P45, P46, P47, P48, P49, P50, P51, P52, P53, P54, P55, P56, P57, P58, P59, P60, P61, P62, P63, P64, P65, P66, P67, P68, P69, P70, P71, P72, P73 e P74	75x75	30	4010c/21	4010c/21
P6, P27 e P59	65x75	30	3010c/24	3010c/24
P17, P19, P21, P23, P25, P29, P31, P33, P35, P40, P42, P44, P46, P49, P51, P53, P55 e P57	85x85	30	4010c/21	4010c/21
P38	75x65	30	3010c/21	4010c/21

Residencial Morada Cidadã		Data:
Local:		10/10/2024
Residencial Morada Cidadã		Número de desenho:
Promotor:		01/06
Prefeitura Municipal de Campos de Júlio		Gabarito
Projeto Estrutural	Escala:	
	Indicada	
Eduardo Rampanelli Tosetto Engenheiro Civil Número da CREA: 122583/037		Data:
		17/06/2025